



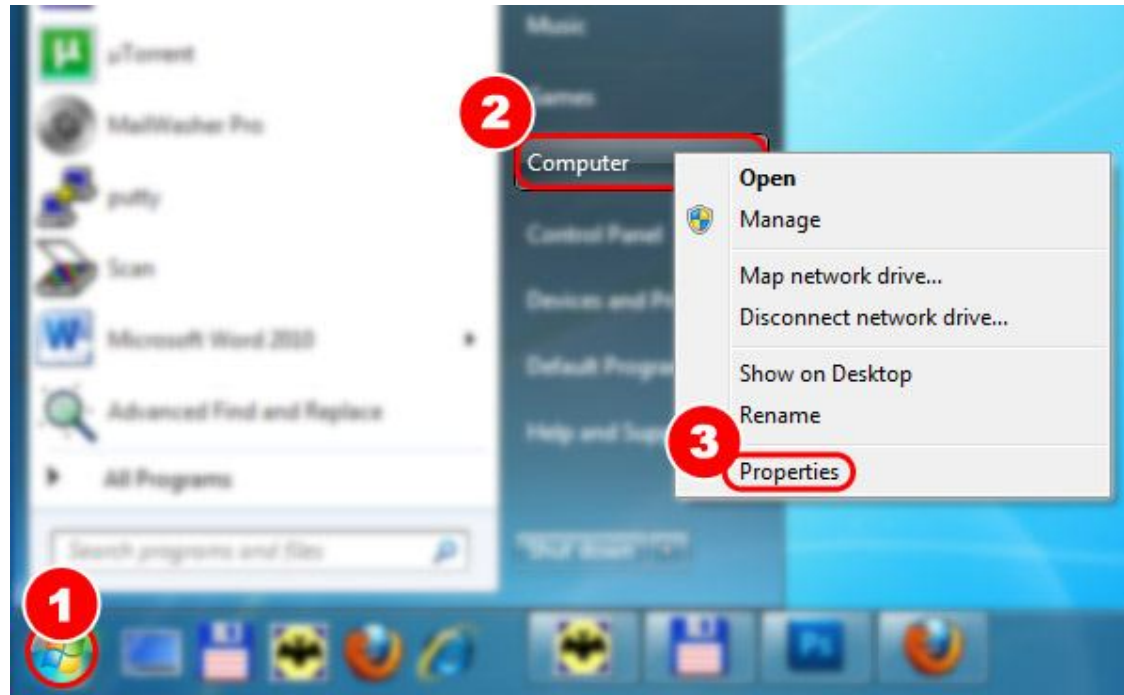
**MICRO-BOX**

[www.micro-box.com](http://www.micro-box.com)

***PDF TUTORIAL***

**How to install Micro-box device**

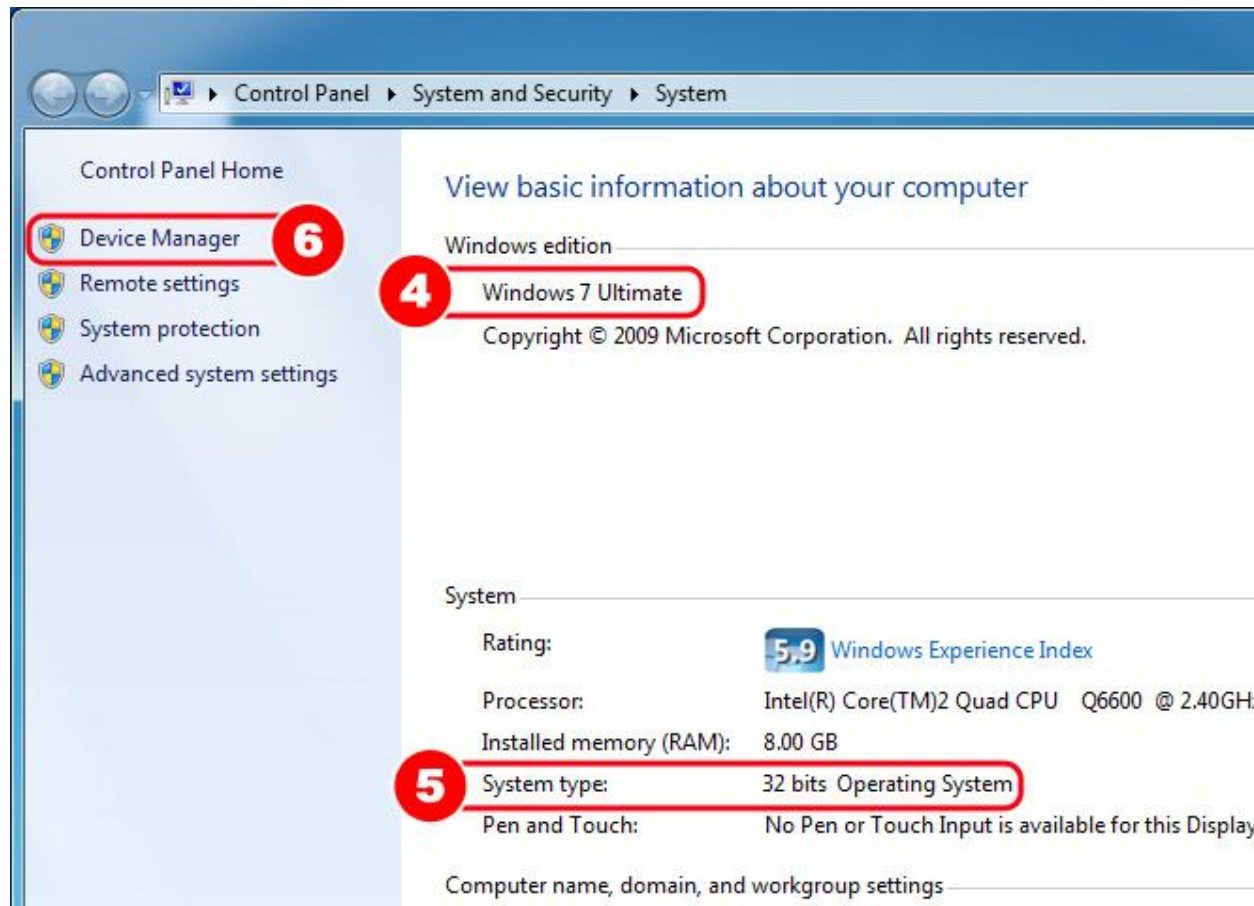
*Windows 7 (32bit edition)*



**STEP 01:** Click **START** button

**STEP 02:** Make right click on options **COMPUTER**

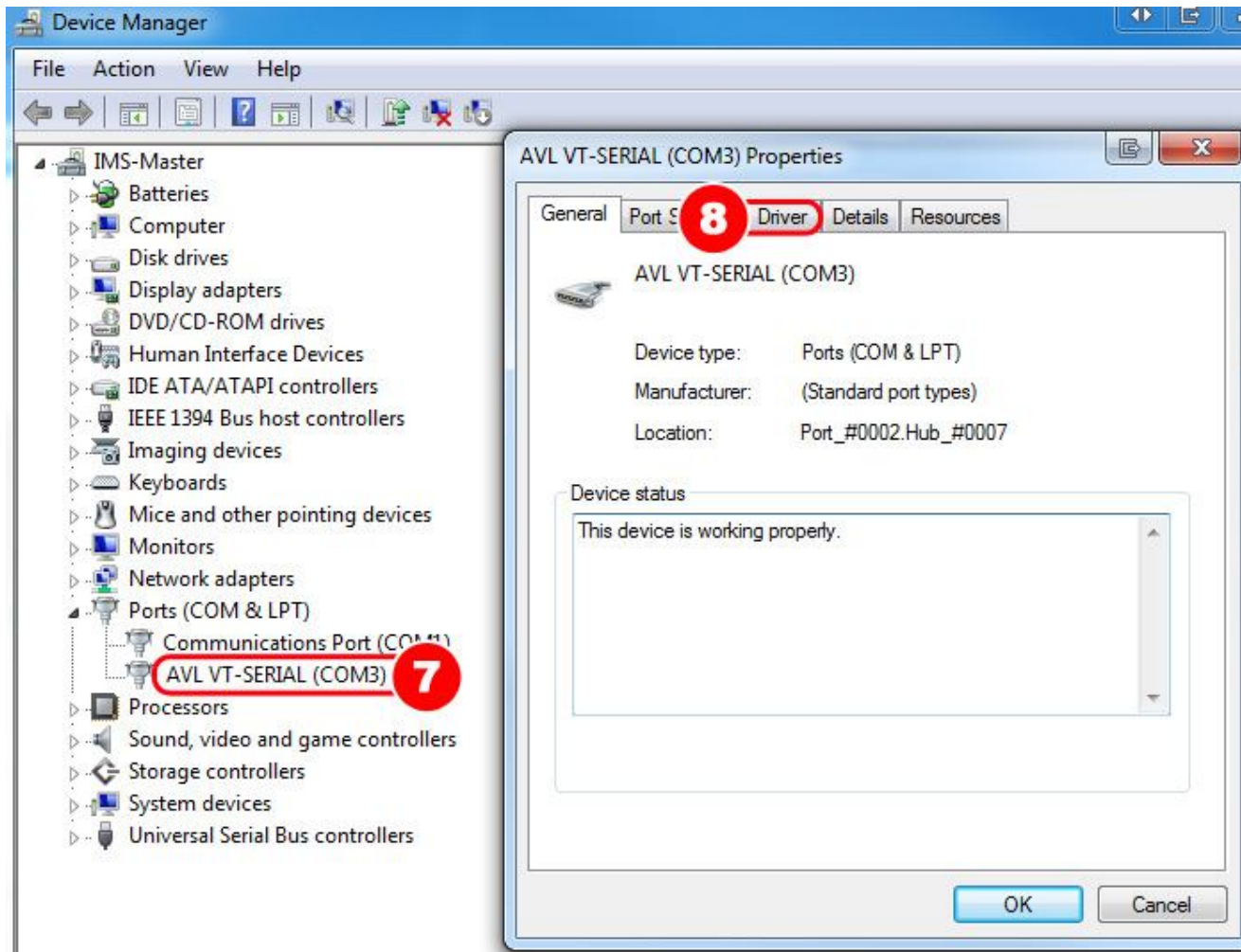
**STEP 03:** Go to options **PROPERTIES**



**STEP 04:** You have Windows 7

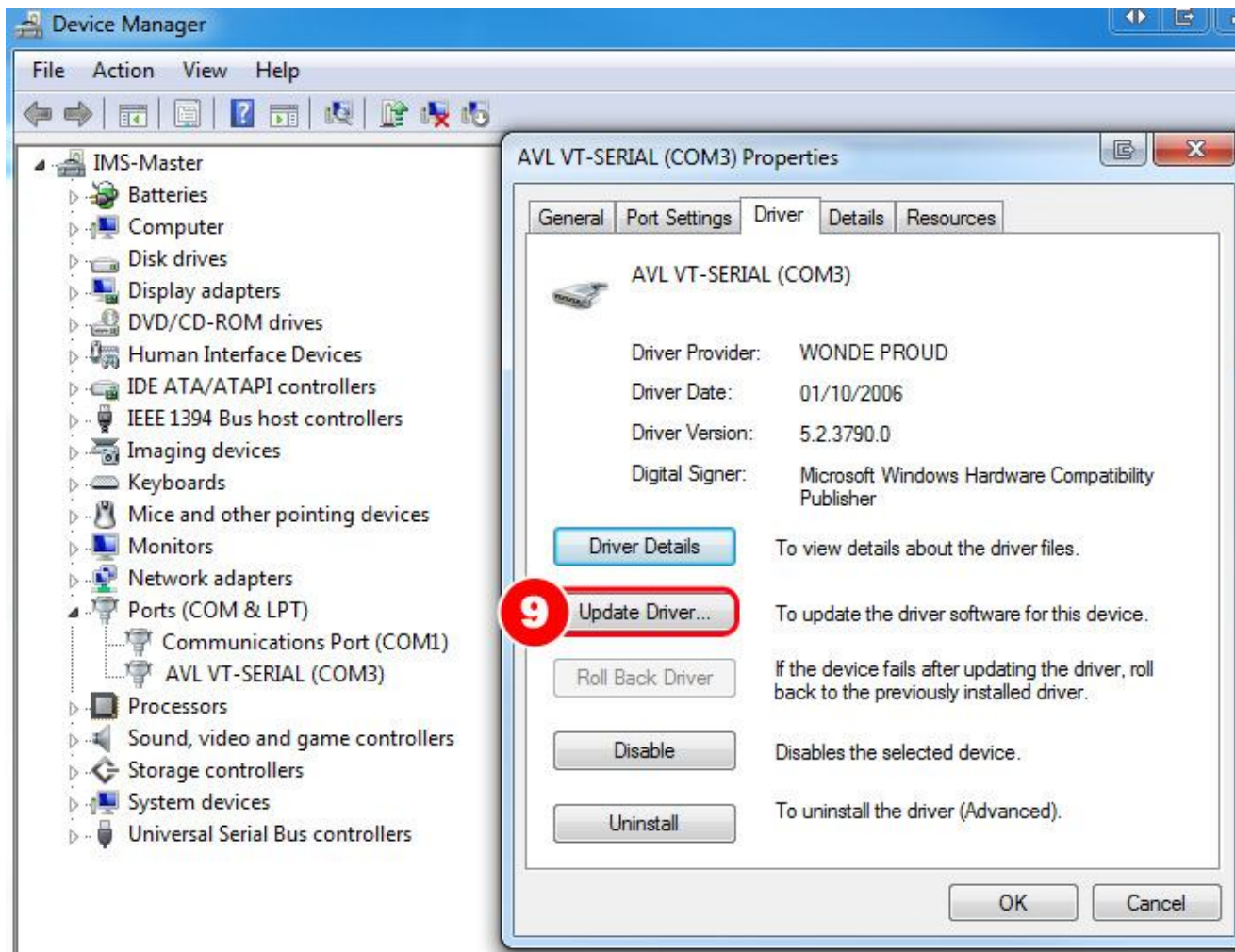
**STEP 05:** 32 bits edition

**STEP 06:** Go to options **DEVICE MANAGER**

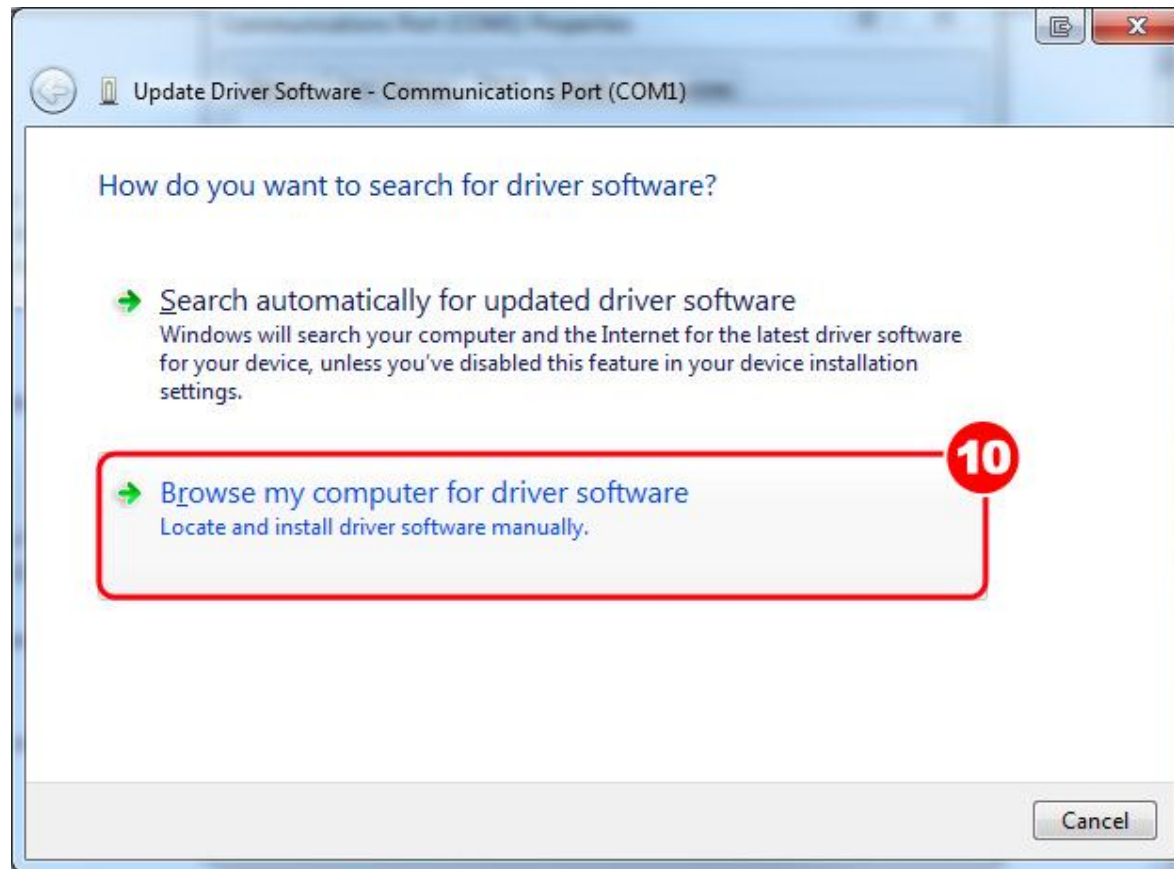


**STEP 07:** Go to **AVL VT SERIAL** under options **Ports (COM & LPT)** and make double click on it

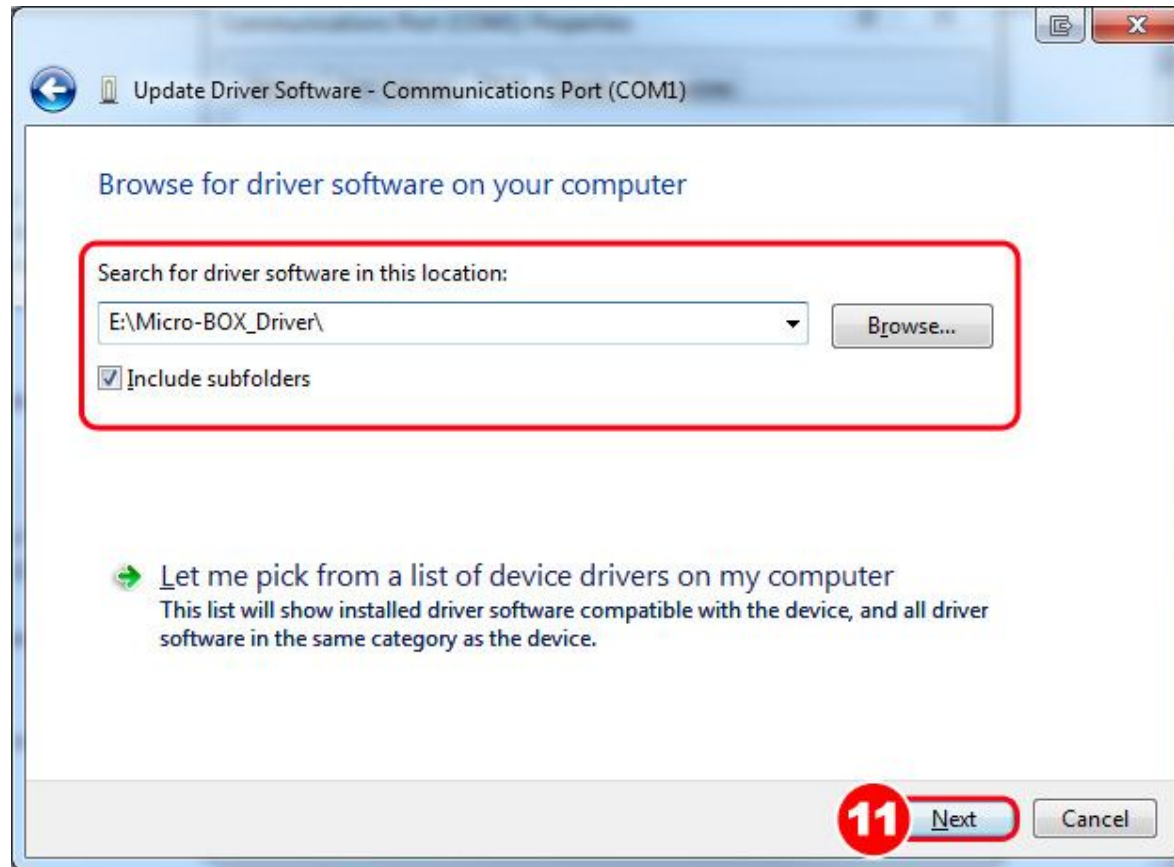
**STEP 08:** Go to tab **Driver**



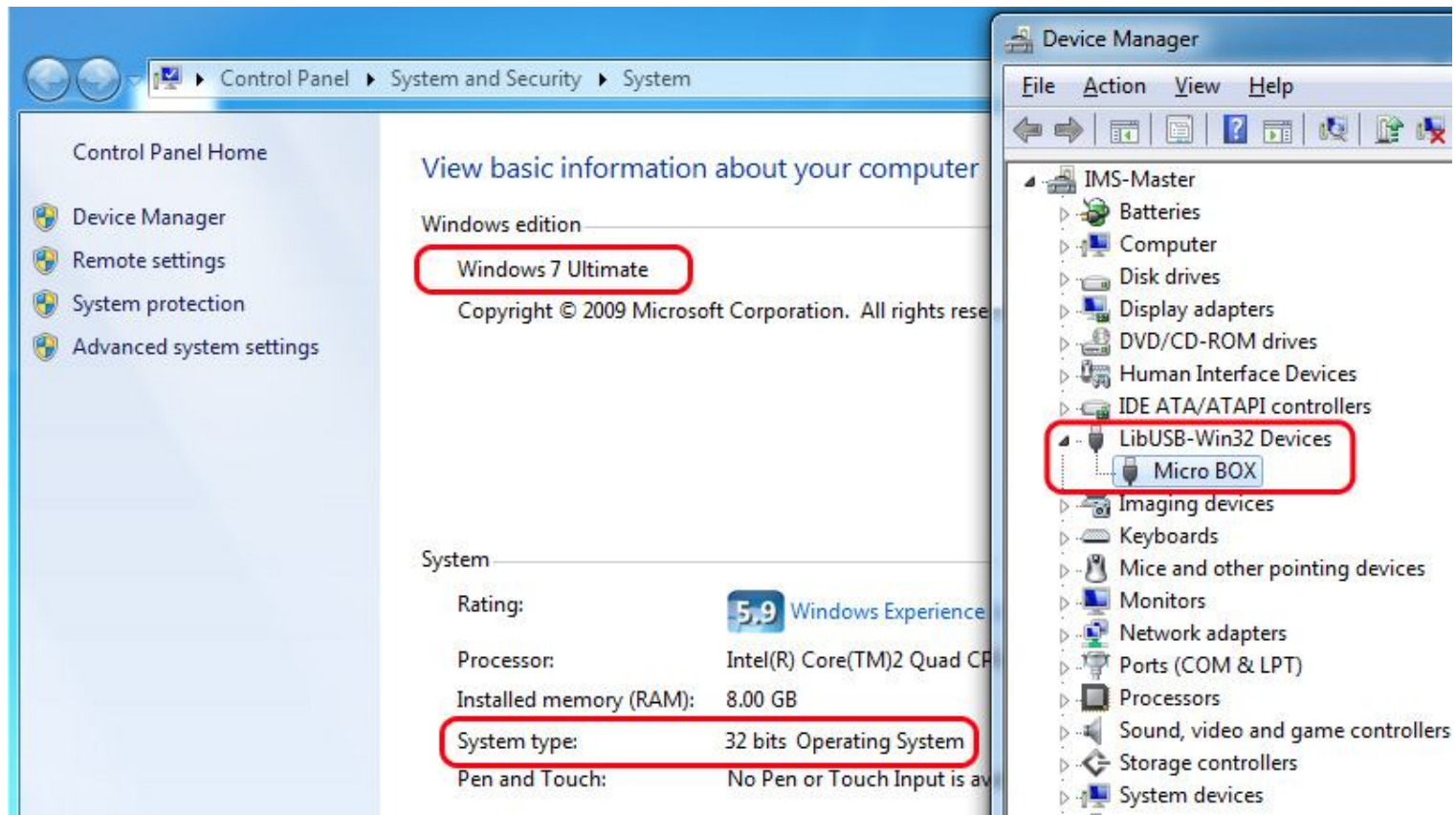
**STEP 09:** Go to option **UPDATE DRIVER**



**STEP 10:** Select option **BROWSE MY COMPUTER FOR DRIVER SOFTWARE**



**STEP 11:** Provide correct link to drivers and go to option **NEXT**



After completing all steps you are done. You can see Micro-box as Device and you can use it on your Windows 7 (32bits)